

## 40 SERIES DFI664XXL



## FEATURES

Accepts custom panel and handle

---

Premium height-adjustable upper rack and premium lower rack

---

Top tray with Instant Lift™

---

Heavy-duty stainless steel construction

---

Nylon-coated steel racks

---

Turbo Drying™ system

---

16 place-setting capacity

---

Quiet operation—42 dB(A)

---

9Spray™ wash system

---

Hidden controls

---

LED lit interior

---

Delayed start

## ACCESSORIES

Stainless steel front panel with tubular or pro handle

---

Stainless steel tubular or pro handle

Accessories available through an authorized Asko dealer. For local dealer information, visit the where to buy section of our website, askona.com.



## PROGRAMS

- Normal Wash
- Eco Wash
- Sanitation Wash
- Time Program
- Plastic Wash
- Hygiene Wash
- Crystal Glass
- Lower Half Wash
- Upper Half Wash
- Self-Cleaning
- Rinse and Hold

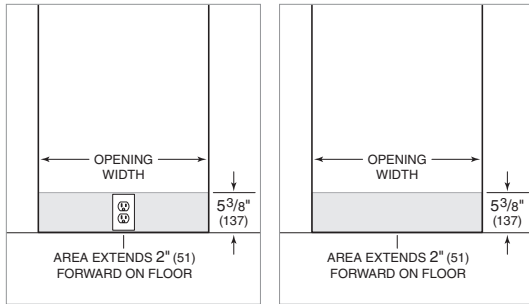
**PRODUCT SPECIFICATIONS**

|                   |  |
|-------------------|--|
| Model             | DFI664XXL  |
| Width             | 23 <sup>5</sup> / <sub>8</sub> "                 |
| Height            | 34" – 35 <sup>3</sup> / <sub>4</sub> "           |
| Depth             | 22"  |
| Door Clearance    | 24 <sup>5</sup> / <sub>8</sub> "                 |
| Weight            | 115 lb   |
| Electrical Supply | 115 VAC, 60 Hz                                   |
| Service           | 15 amp dedicated circuit                         |
| Receptacle        | 3-prong grounding-type                           |
| Power Cord        | 4'   |
| Water Connection  | 6" PEX tubing with<br>3/8" NPT female connection |
| Drain Connection  | 5' corrugated tubing                             |
| Pressure          | 4.2–140 psi                                      |

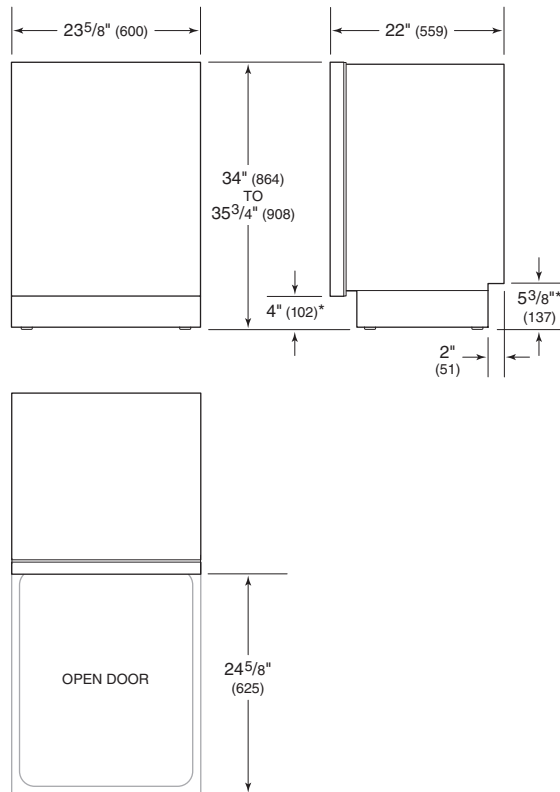
Product dimensions do not include panel and handle.  
Dimensions will vary with panel thickness.

Electrical supply, plumbing supply, and drain should be located in an adjacent cabinet. If not, they must be located within the shaded area shown in the illustrations below.

**ELECTRICAL | PLUMBING**

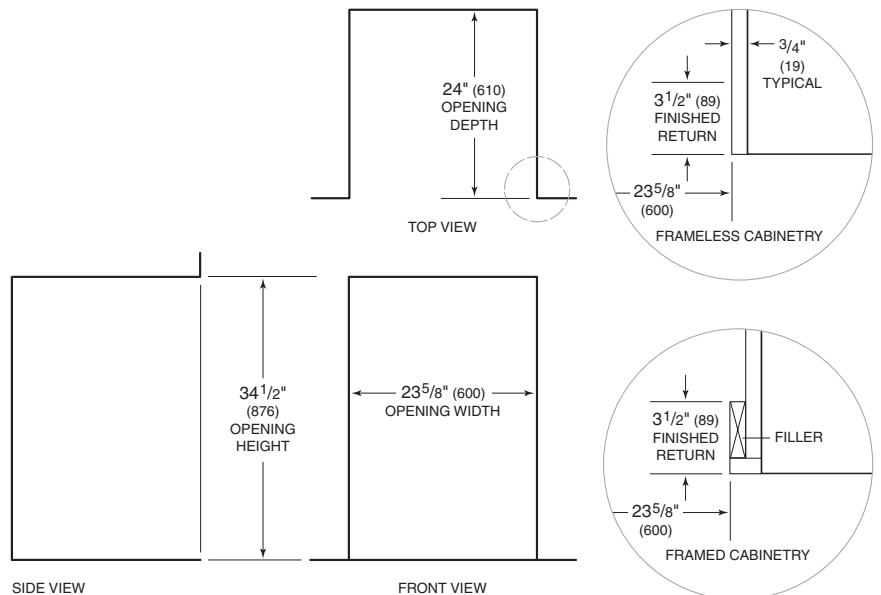


**DIMENSIONS**



\*Dimension will vary with product height.

**INSTALLATION**



NOTE: 3 1/2" (89) finished returns will be visible and should be finished to match cabinetry.

CSO30CM/B/TH



## FEATURES

Larger than similar units, can make multiple dishes at once

10 cooking modes make meals easy

Easy-access water tank provides 90 minutes of steam cooking

Installs flush with cabinetry or integrated into your kitchen design

Gourmet mode adjusts time, temperature, humidity for perfect results

Rigorously tested in our U.S. manufacturing facilities for decades of use

Exceptional 24/7 support from our Customer Care team in Madison

Steam mode captures nutrition, flavor and color

Reheat mode rehydrates leftovers flavorfully

Auto Steam Bake mode for bagels, breads, pastries

Convection mode for consistent results and beautiful browning

Convection Humid mode seals in moisture for juicy results

Convection Steam mode for foods tender inside, crisped outside

Slow Roast mode cooks dinner while you're away

Recipes mode cooks from collection of built-in recipes

"Keep Warm" mode

Program in when you want your dish to be ready

Temperature probe lets you know when it's done

Two pans, four rack positions

## ACCESSORIES

Descaling Solution

Full Extension Rack Guides

Oven Rack

Perforated Pan 12 3/4" x 1 1/2" x 7"

Perforated Pan 12 3/4" x 2 1/2" x 7"

Perforated Pan 17 3/4" x 1 1/4" x 15"

Porcelain Baking Sheet

Solid Pan 12 3/4" x 1 1/2" x 7"

Solid Pan 12 3/4" x 1 1/4" x 14"

Solid Pan 17 3/4" x 1 1/4" x 15"

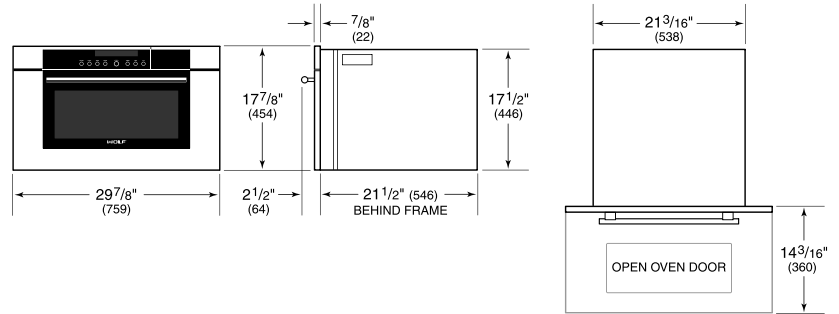
Accessories available through an authorized Sub-Zero dealer.  
For local dealer information, visit [subzero-wolf.com/locator](http://subzero-wolf.com/locator).



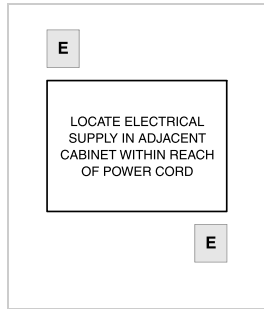
**PRODUCT SPECIFICATIONS**

|                          |                                |
|--------------------------|--------------------------------|
| Model                    | CSO30CM/B/TH                   |
| Dimensions               | 29 7/8"W x 17 7/8"H x 21 1/2"D |
| Oven Interior Dimensions | 17 7/8"W x 11"H x 15 3/4"D     |
| Capacity                 | 1.8 cu. ft.                    |
| Door Clearance           | 14 3/16"                       |
| Weight                   | 80 lbs                         |
| Electrical Supply        | 240/208 VAC, 60 Hz             |
| Electrical Service       | 20 amp dedicated circuit       |
| Overall Capacity         | 1.8 cu. ft.                    |
| Power Cord Length        | 6 Feet                         |
| Receptacle               | NEMA 6-20R grounding-type      |

**DIMENSIONS**



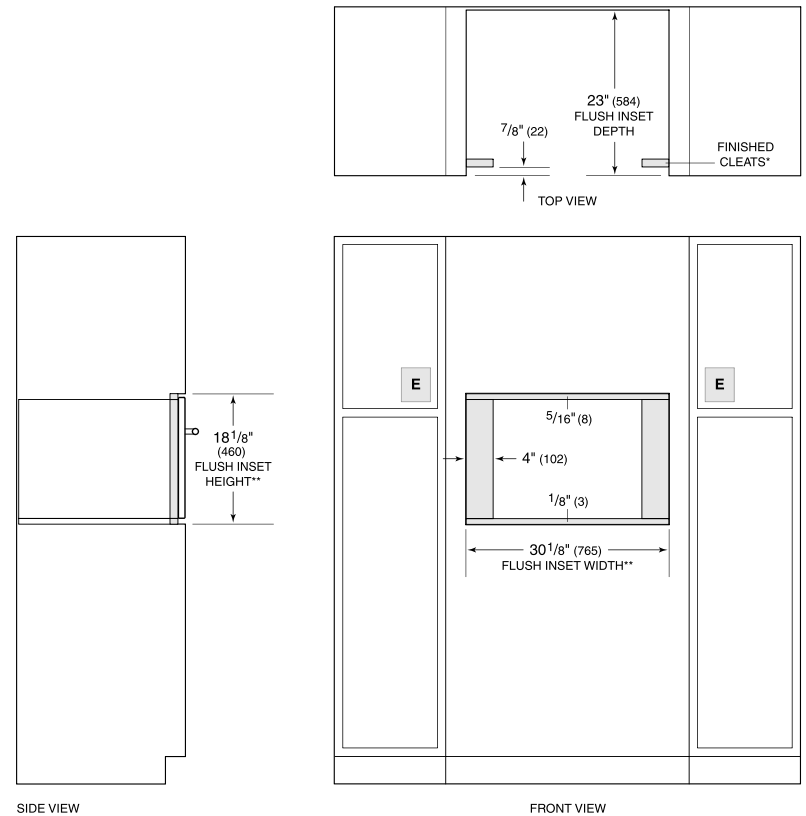
**ELECTRICAL**



**NOTE:**

Dimensions in parenthesis are in millimeters unless otherwise specified

**FLUSH INSTALLATION**



\*Will be visible and should be finished to match cabinetry.  
 \*\*Dimension provides minimum reveals.

NOTE: Electrical supply must be located in adjacent cabinet within 3' (.9 m) of opening.

SO30CM/B



## FEATURES

Black glass, handleless design for Wolf performance at its sleekest

10 cooking modes for predictably delicious results (Convection, Roast, Bake, Broil, Convection Roast, Stone, Gourmet, Warm, Proof and Dehydrate)

Advanced Dual VertiCross convection system for faster preheats and consistent cooking across all racks

Gourmet feature has menu of presets that automatically controls cooking of popular meals

5.1 cubic feet capacity to handle multiple dishes at once

Interactive color touchscreen for advanced cooking control

Enhanced interior views with triple-pane glass and three halogen lights

Can be installed flush with surrounding cabinetry for integrated look

Rigorously tested in our U.S. manufacturing facilities for decades of use

Exceptional 24/7 support from our Customer Care team in Madison

## ACCESSORIES

30" Premier Baking Sheet

Bake Stone Kit

Broiler Pan

Dehydration Kit

Dual Installation Kit

Full-Extension Ball Bearing Rack

Multi-Function Pan

Oven Rack

Oven Rack Set (3)

Temperature Probe

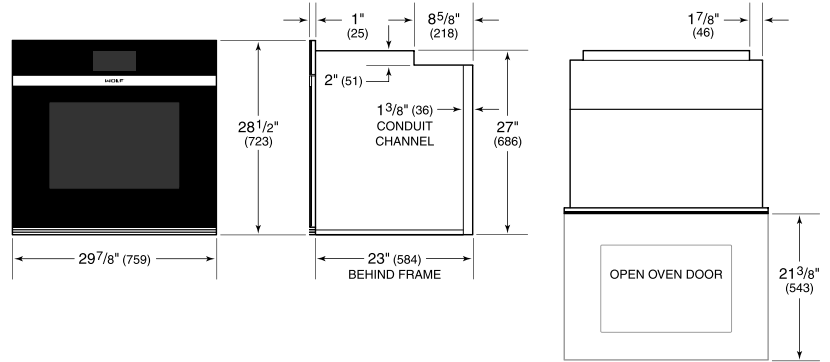
Accessories available through an authorized Sub-Zero dealer.  
For local dealer information, visit [subzero-wolf.com/locator](http://subzero-wolf.com/locator).



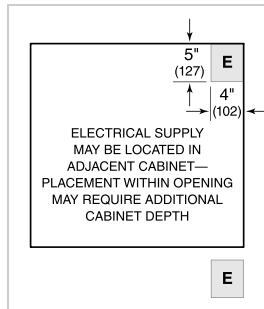
**PRODUCT SPECIFICATIONS**

|                            |                                |
|----------------------------|--------------------------------|
| Model                      | SO30CM/B                       |
| Dimensions                 | 29 7/8"W x 28 1/2"H x 23"D     |
| Oven 1 Interior Dimensions | 25 1/4"W x 17 1/2"H x 19 7/8"D |
| Overall Capacity           | 5.1 cu. ft.                    |
| Usable Capacity            | 3.3 cu. ft.                    |
| Door Clearance             | 21 3/8"                        |
| Weight                     | 273 lbs                        |
| Electrical Supply          | 240/208 VAC, 60 Hz             |
| Electrical Service         | 30 amp dedicated circuit       |
| Conduit Length             | 4 Feet                         |

**DIMENSIONS**



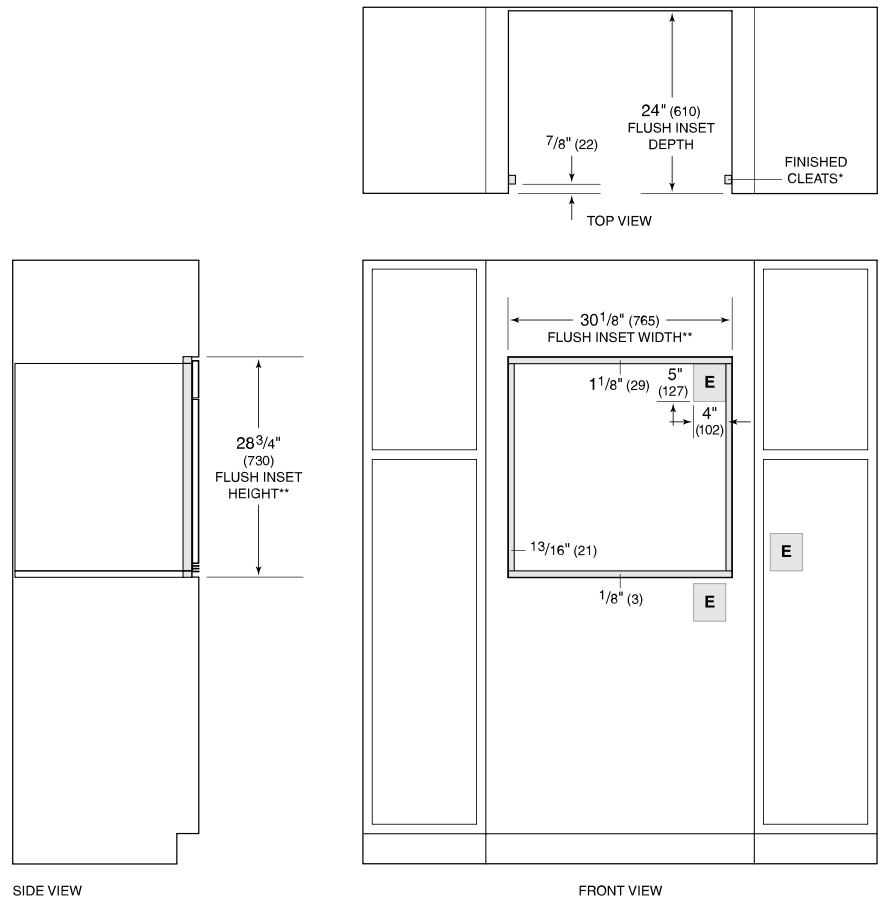
**ELECTRICAL**



**NOTE:**

Dimensions in parenthesis are in millimeters unless otherwise specified

**FLUSH INSTALLATION**



\*1" (25) minimum depth. Shaded areas will be visible and should be finished to match cabinetry.  
 \*\*Dimension provides minimum reveals.  
 NOTE: Location of electrical supply within opening may require additional cabinet depth.

IT-30CIID



## FEATURES

- Ready to be fitted with custom panels and handles to blend with cabinetry
- Dual refrigeration keeps food fresher longer
- Air purification system fights spoilage, odors
- Internal water dispenser works with seamless design
- Over-and-under refrigerator/freezer storage
- Nano-coated spill-proof shelves for easy clean-up
- Crispers and deli drawers in low-temp, high-humidity zones for optimum freshness
- Smart-touch controls for streamlined access to more settings
- Water-filtration system reduces contaminants, chlorine taste and odor
- Automatic ice maker with "max ice" feature
- Rigorously tested in our U.S. manufacturing facilities to ensure decades of use
- Exceptional 24/7 support from Madison, WI-based Customer Care team

## ACCESSORIES

- Air Purification Cartridge
- Egg Container
- Water Filter 4204490
- Stainless Steel Tubular Handles
- Stainless Steel Pro Handles
- Stainless steel kickplate
- Stainless steel side enclosure
- Stainless steel top enclosure
- Reduced toe kick divider for toe kicks from 2" to 3.875"
- Dual Installation Kits
- Replacement water filter
- Stainless Steel Door Panels With Pro Handle
- Stainless Steel Door Panels With Tubular Handle
- Stainless Steel Drawer Panels With Pro Handles
- Stainless Steel Drawer Panels With Tubular Handles

Accessories are available through an authorized Sub-Zero dealer. For local dealer information, visit [subzero-wolf.com/locator](http://subzero-wolf.com/locator).



## HANDLE ACCESSORIES

PRO



TUBULAR



## PRODUCT DETAILS

### REFRIGERATOR

- Three adjustable glass shelves
- One stationary shelf
- Crisper drawer with two adjustable dividers
- Adjustable dairy compartment
- Two adjustable door shelves
- One stationary door shelf

### FREEZER

- Three adjustable drawer dividers
- Removable ice container
- Automatic ice maker
- Air purification system

# 30" INTEGRATED OVER-AND-UNDER REFRIGERATOR/FREEZER WITH ICE MAKER AND INTERNAL DISPENSER - PANEL READY

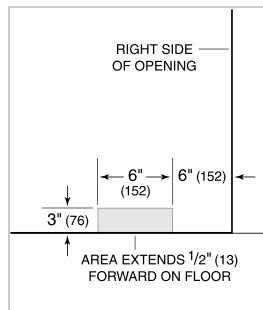
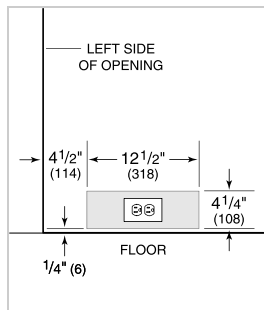


## PRODUCT SPECIFICATIONS

|                       |                          |
|-----------------------|--------------------------|
| Model                 | IT-30CIID                |
| Dimensions            | 30"W x 84"H x 24"D       |
| Door Clearance        | 28 1/2"                  |
| Drawer Clearance      | 18 3/8"                  |
| Weight                | 400 lbs                  |
| Refrigerator Capacity | 10.6 cu. ft.             |
| Freezer Capacity      | 5 cu. ft.                |
| Electrical Supply     | 115 VAC, 60 Hz           |
| Electrical Service    | 15 amp dedicated circuit |
| Receptacle            | 3-prong grounding-type   |

## ELECTRICAL

## PLUMBING



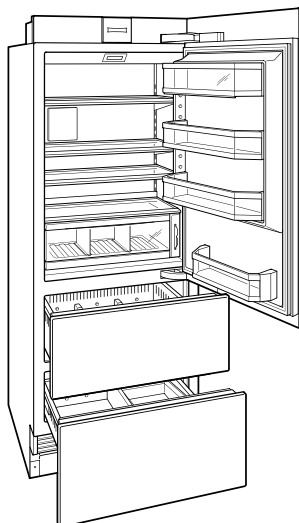
## PANEL SPECIFICATIONS

For complete panels specifications including width/height, weight requirements and thickness requirements visit [subzero-wolf.com/integratedconfigurator](http://subzero-wolf.com/integratedconfigurator).

## NOTE:

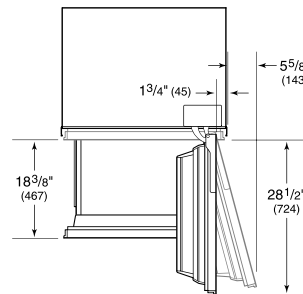
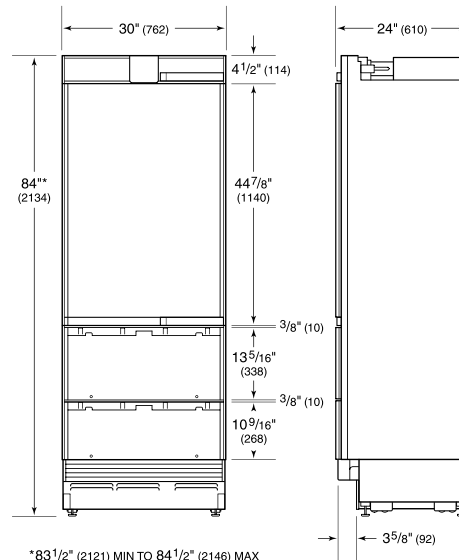
Dimensions in parenthesis are in millimeters unless otherwise specified

## INTERIOR VIEW

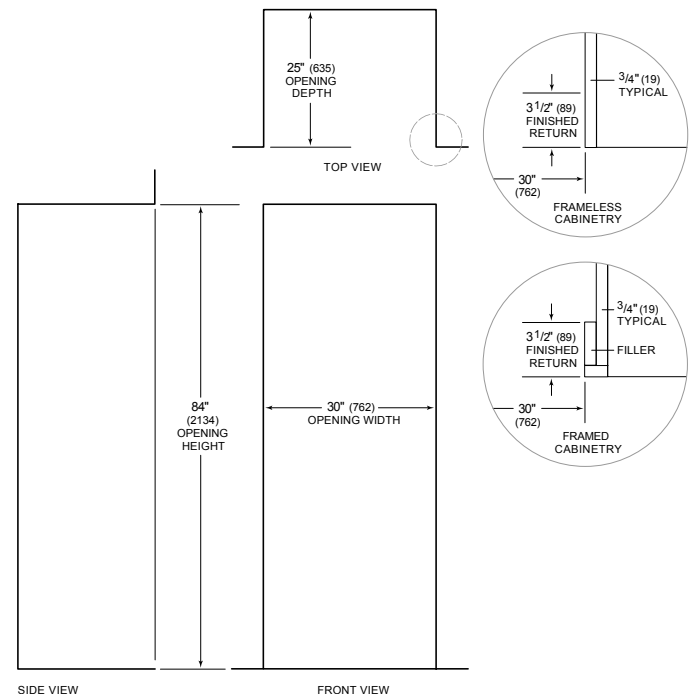


This illustration is intended for interior reference only and may not represent the exterior of the model being specified.

## DIMENSIONS



## STANDARD INSTALLATION



NOTE: 3 1/2" (89) finished returns will be visible and should be finished to match cabinetry





## C1304C/B

### FEATURES

Four elements and bridging option to accommodate different pan sizes

40% faster temperature response than gas or electric

Magnetic induction technology provides fast and perfectly distributed heat

Incredible cooking control, with lightning fast high heat and very low lows

Can be installed flush with countertop for smooth, continuous surface

Rigorously tested in our U.S. manufacturing facilities for decades of use

Exceptional 24/7 support from our Customer Care team in Madison

Cooktop stays relatively cool for added safety and easy cleanup

Cookware sensing guards against hot burners being left on

Efficiently transfers heat, because energy is supplied directly to the cookware



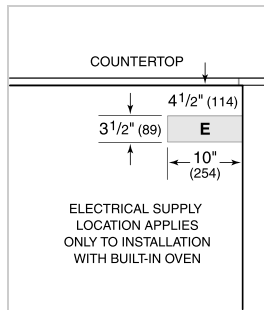
### COOKTOP SPECIFICATIONS

- 1 - 1400 W Element
- 1 - 2100 W Element
- 1 - 2100 W Element with 3000 W Boost
- 1 - 2600 W Element with 3150 W Boost

**PRODUCT SPECIFICATIONS**

|                    |                            |
|--------------------|----------------------------|
| Model              | CI304C/B                   |
| Dimensions         | 30"W x 2 1/2"H x 21"D      |
| Weight             | 49 lbs                     |
| Electrical Supply  | 3-wire, 240/208 VAC, 60 Hz |
| Electrical Service | 40 amp dedicated circuit   |
| Conduit Length     | 4 Feet                     |

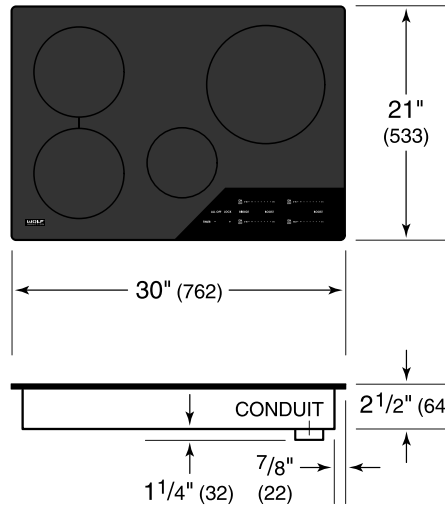
**ELECTRICAL**



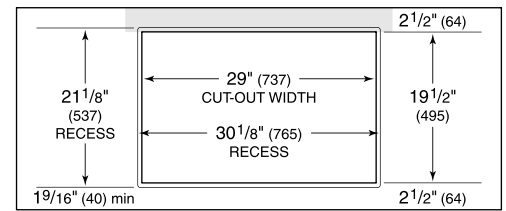
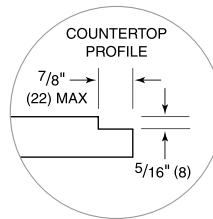
**NOTE:**

Dimensions in parenthesis are in millimeters unless otherwise specified

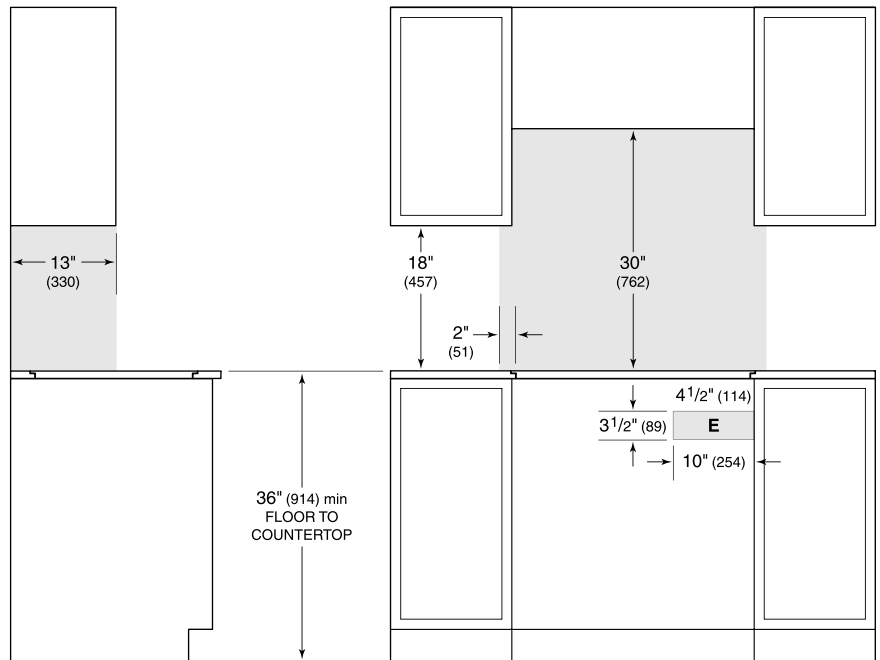
**DIMENSIONS**



**FLUSH INSTALLATION**



COUNTERTOP CUT-OUT



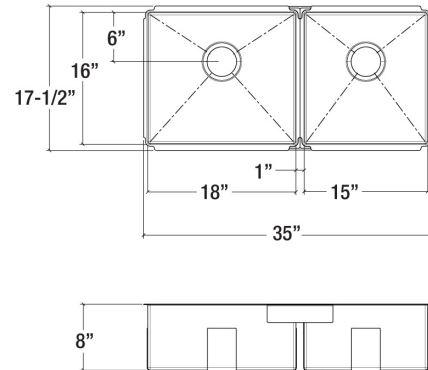
SIDE VIEW

FRONT VIEW

*NOTE: Shaded area above countertop indicates minimum clearance to combustible surfaces, combustible materials cannot be located within this area. Electrical supply location only applies to installations with built-in oven. Outside corner radius 7/16" (11).*

## 003947 | J7<sup>®</sup>

### UNDERMOUNT STAINLESS STEEL KITCHEN SINK



#### Specifications

|                     |                                      |
|---------------------|--------------------------------------|
| Model               | 003947                               |
| Collection          | J7 <sup>®</sup>                      |
| Bowls dimensions    | L 18" × 16" × 8"<br>R 15" × 16" × 8" |
| Overall dimensions  | 35 1/2" × 17 1/2" × 8"               |
| Recommended cabinet | 39"                                  |

#### Recommended accessories

|                    |        |
|--------------------|--------|
| Drain              | 100082 |
| Grid (coming soon) | 200904 |
| Grid (coming soon) | 200905 |
| Colander           | 205223 |
| Bin                | 205226 |
| Tray               | 205232 |
| Cutting board      | 210063 |
| Drying Rack        | 215206 |

#### Warranty

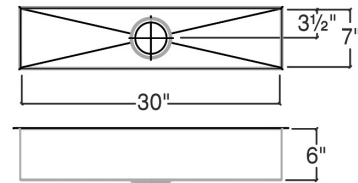
Home Refinements offers a LIMITED LIFETIME WARRANTY on the fixed components of its stainless steel sinks against defects of material and workmanship. For further details on our product warranty, please refer to our catalog or Web site.

#### Features

- Handcrafted in Canada
- Commercial quality stainless steel - 16 ga thickness
- Corrosion resistant material - 304 series (18/10)
- Environmentally friendly product, 100% recyclable
- Elegant no. 4 brushed finish that matches the appliances
- Highly efficient sound deadening pads
- Practical flat sink bottom and straight bowl sides that maximize available space in the bowl
- Stylish and functional bowl bottom grooves that facilitate water drainage
- Rear 3-1/2" drain placement
- Mounting hardware and cutout template included
- Certifications: ASME A112.19.3, CSA B45.0, CSA B45.4

## 003968 | J7®

### UNDERMOUNT STAINLESS STEEL BAR SINK



#### Specifications

|                     |                       |
|---------------------|-----------------------|
| Model               | 003968                |
| Collection          | J7®                   |
| Bowl dimensions     | 30" × 7" × 6"         |
| Overall dimensions  | 31 1/2" × 8 1/2" × 6" |
| Recommended cabinet | 36"                   |

#### Recommended accessories

|       |        |
|-------|--------|
| Drain | 100082 |
|-------|--------|

#### Warranty

Home Refinements offers a LIMITED LIFETIME WARRANTY on the fixed components of its stainless steel sinks against defects of material and workmanship. For further details on our product warranty, please refer to our catalog or Web site.

#### Features

- Handcrafted in Canada
- Commercial quality stainless steel - 16 ga thickness
- Corrosion resistant material - 304 series (18/10)
- Environmentally friendly product, 100% recyclable
- Elegant no. 4 brushed finish that matches the appliances
- Highly efficient sound deadening pads
- Practical flat sink bottom and straight bowl sides that maximize available space in the bowl
- Stylish and functional bowl bottom grooves that facilitate water drainage
- Center 3-1/2" drain placement
- Certifications: ASME A112.19.3, CSA B45.0, CSA B45.4



Kitchen - Tara Ultra  
Single-lever mixer - polished chrome  
Article number: 33 800 875-00 0010



- 7-7/8" Projection
- Swiveling spout 360°
- Areated stream
- Total height 14-5/8"
- Height to aerator/spout outlet 9-1/2"
- 1-3/8" hole diameter
- 2x 3/8" US flexible supply lines
- Water flow rate limited to max. 1.5 gpm
- lead-free

#### Codes & Standards

- NSF/ANSI 372
- California Energy Commission (CEC)
- ASME A112.18.1/CSA B125.1
- NSF/ANSI/CAN 61
- ADA

- (ADA)
- Combination with side spray set or profi side spray set not possible.

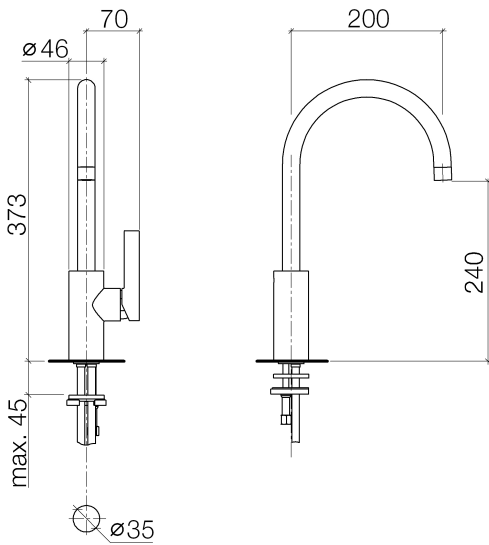


polished chrome



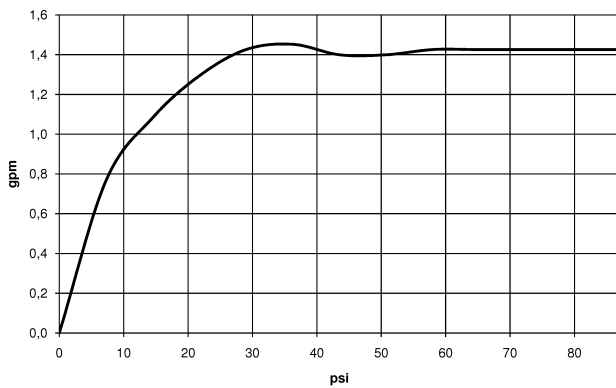
Kitchen - Tara Ultra  
Single-lever mixer - polished chrome  
Article number: 33 800 875-00 0010

### Dimensional drawing



All dimensions in mm / inch = mm x 0,0394

### Flow rate chart





Kitchen - Tara Ultra  
Single-lever mixer - polished chrome  
Article number: 33 800 875-00 0010

### Other surface finishes



platinum matte  
33 800 875-06 0010



platinum  
33 800 875-08 0010



Brushed Durabronz  
33 800 875-28 0010



Dark Platinum matte  
33 800 875-99 0010

More custom finish options are available via special production (xTra Service). Please see our finish matrix for availability and pricing or contact a Dornbracht representative.



10 713 970-00  
AIR SWITCH operating  
button, trim parts only -  
polished chrome

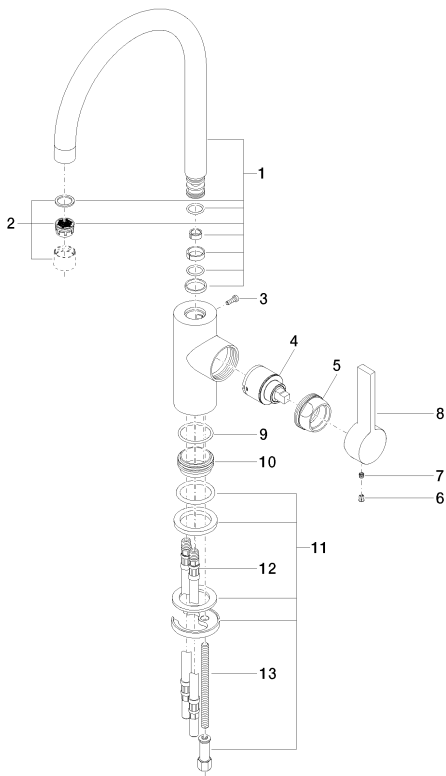


82 424 970-00  
Soap dispenser without  
flange - polished chrome



Kitchen - Tara Ultra  
 Single-lever mixer - polished chrome  
 Article number: 33 800 875-00 0010

Spare parts list



| Number | Item Number        | Designation               | Number of units |
|--------|--------------------|---------------------------|-----------------|
| 1      | 90 28 22 204 03-00 | spout                     | 1               |
| 2      | 90 23 01 004 02-00 | aerator                   | 1               |
| 3      | 09 30 30 080 90    | screw                     | 1               |
| 4      | 90 15 05 034 00 90 | cartridge                 | 1               |
| 5      | 09 24 04 107-00    | nut                       | 1               |
| 6      | 09 31 20 017 90    | plug                      | 1               |
| 7      | 09 31 11 030 90    | pin                       | 1               |
| 8      | 09 20 79 040-00    | handle                    | 1               |
| 9      | 09 14 10 119 90    | seal                      | 1               |
| 10     | 09 28 10 109-07    | ring                      | 1               |
| 11     | 04 30 11 085 88 90 | fixing set                | 1               |
| 12     | 04 30 04 045 00 90 | Flexible supply line 3/8" | 2               |
| 13     | 09 31 11 012 90    | pin                       | 1               |



## Kitchen - Tara Ultra

Single-lever mixer pull-down with spray function - polished chrome

Article number: 33 870 875-00 0010

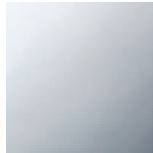


- 9-1/2" Projection
- Swiveling spout 360°
- Optional restriction, swivels 110°
- Laminar and spray function
- Total height 19-5/8"
- 9-1/2" height to aerator/spout outlet
- 1-3/8" hole diameter
- 2x 10 mm flexible supply lines including 3/8" US adapters
- 59" metal shower hose
- Sprayface with descaling system
- Water flow rate limited to max. 1.5 gpm
- lead-free

### Codes & Standards

- NSF/ANSI 372
- California Energy Commission (CEC)
- ASME A112.18.1/CSA B125.1
- NSF/ANSI/CAN 61
- ADA

- (ADA)
- Internal backflow preventer.
- Push button locks into spray mode when pressed. To switch back to laminar flow the water must be turned off.



polished chrome

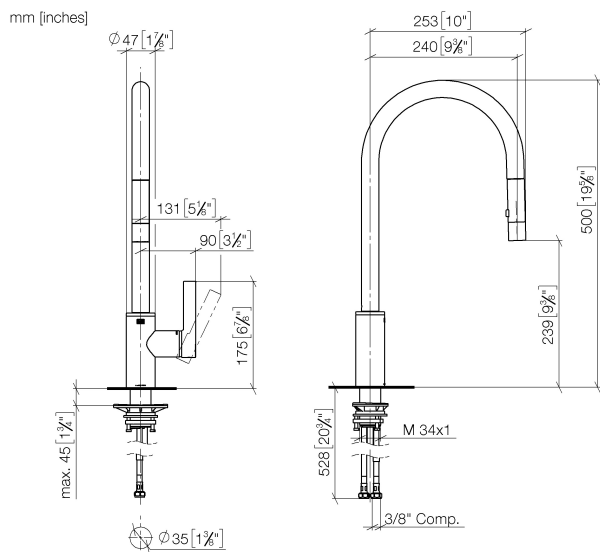


## Kitchen - Tara Ultra

Single-lever mixer pull-down with spray function - polished chrome

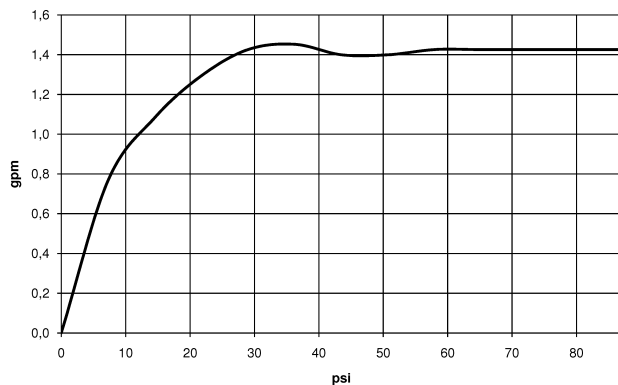
Article number: 33 870 875-00 0010

### Dimensional drawing



All dimensions in mm / inch = mm x 0,0394

### Flow rate chart





## Kitchen - Tara Ultra

Single-lever mixer pull-down with spray function - polished chrome

Article number: 33 870 875-00 0010

### Other surface finishes



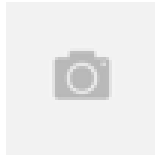
platinum matte

33 870 875-06 0010



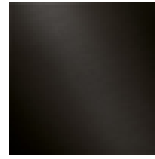
platinum

33 870 875-08 0010



Brushed Durabronz

33 870 875-28 0010



Dark Platinum matte

33 870 875-99 0010

More custom finish options are available via special production (xTra Service). Please see our finish matrix for availability and pricing or contact a Dornbracht representative.



10 713 970-00

AIR SWITCH operating button, trim parts only - polished chrome



82 424 970-00

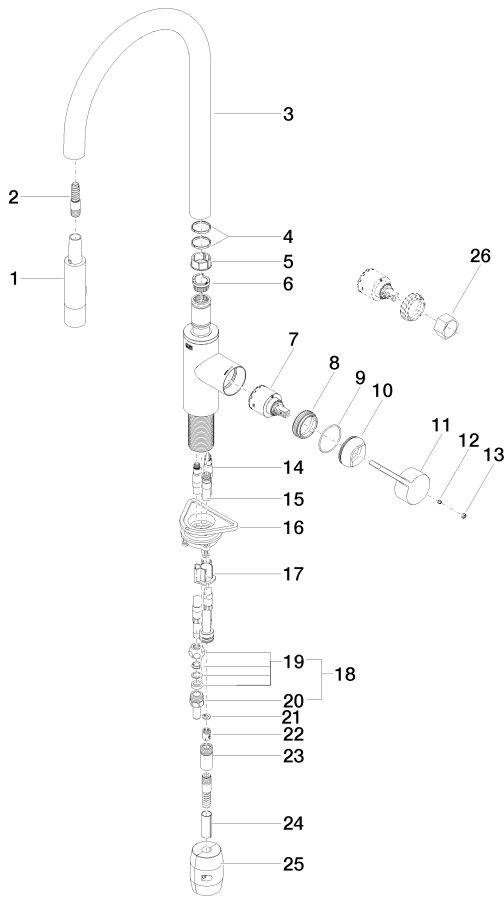
Soap dispenser without flange - polished chrome

**Kitchen - Tara Ultra**

Single-lever mixer pull-down with spray function - polished chrome

Article number: 33 870 875-00 0010

**Spare parts list**



| Number | Item Number        | Designation         | Number of units |
|--------|--------------------|---------------------|-----------------|
| 1      | 04 12 11 148 00-00 | shower              | 1               |
| 2      | 04 30 02 120 00-00 | hose                | 1               |
| 3      | 90 28 22 304 00-00 | spout               | 1               |
| 4      | 09 28 10 160 90    | ring                | 1               |
| 5      | 09 18 40 186 90    | sleeve              | 1               |
| 6      | 09 30 11 203 90    | ring                | 1               |
| 7      | 90 15 05 062 00 90 | cartridge           | 1               |
| 8      | 09 23 10 072 90    | nut                 | 1               |
| 9      | 09 14 10 190 90    | seal                | 1               |
| 10     | 09 28 30 030-00    | cover               | 1               |
| 11     | 09 20 87 020-00    | handle              | 1               |
| 12     | 09 31 11 063 90    | pin                 | 1               |
| 13     | 90 31 20 087 00-00 | plug                | 1               |
| 14     | 04 30 04 098 00 90 | hose                | 2               |
| 15     | 04 28 20 066 00 90 | pipe                | 1               |
| 16     | 04 30 11 040 00 90 | fixing set          | 1               |
| 17     | 09 20 93 056 90    | insert              | 1               |
| 18     | 04 24 04 222 00-00 | adaptor             | 2               |
| 19     | 04 23 30 031 01-07 | threaded connector  | 2               |
| 20     | 09 24 04 222 10-00 | adaptor             | 2               |
| 21     | 09 16 01 023 90    | ring                | 1               |
| 22     | 09 23 01 096 90    | back-flow preventer | 1               |
| 23     | 90 24 03 253 00 90 | adaptor             | 1               |
| 24     | 09 30 03 038 90    | hose                | 1               |
| 25     | 04 21 50 010 00 90 | accessories         | 1               |
| 26     | 09 30 09 031 90    | key                 | 1               |

**RAW URTH DESIGNS**

P.O. BOX 369  
BELLVUE, COLORADO 80512  
TELE: 970.484.8851  
E-MAIL: STEEL@RAWURTH.COM

REVISION: 2      DATE: 01.31.19

JOB: 3046  
DRAWN BY: JENKS

**NOTES:**

1. MATERIAL: Brass
2. FINISH: Burnished w/ Clear Coat
3. LINER: Imperial C2030BPB-K, 840CFM, 10" vent. Procured Thru Raw Urth.
4. Installation on site by others. Verify location of duct in order to clear mounting straps.

**CLIENT APPROVAL:**

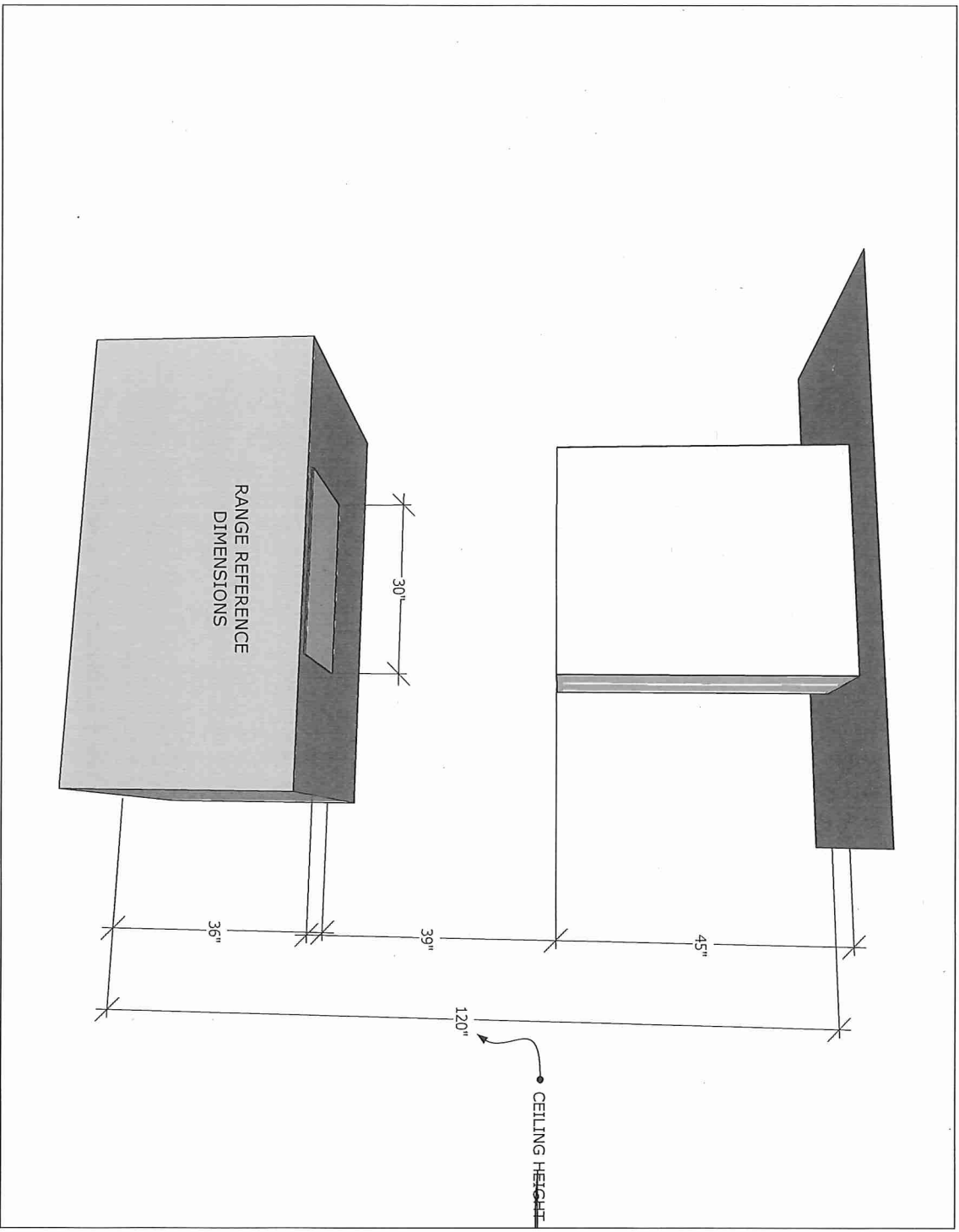
*[Signature]*  
APPROVAL DATE: 2.1.19

CLIENT MUST INITIAL & DATE PRIOR TO FABRICATION OF DESIGN.

THIS DESIGN IS THE PROPERTY OF RAW URTH AND IS SUBMITTED FOR YOUR USE IN CONJUNCTION WITH A PROJECT BEING PLANNED FOR YOU BY RAW URTH. IT CANNOT BE REPRODUCED EITHER IN WHOLE OR IN PART WITHOUT THEIR WRITTEN CONSENT.

**IMPORTANT NOTE:** While Raw Urth Designs makes killer range hoods, it is not a licensed HVAC contractor. Clients are ultimately responsible to verify with their HVAC contractors that the provided hood insert complies with local building codes, makeup air requirements, and range manufacturer specifications.

Initial  I have reviewed and approved the liner C2030BPB-K with my on site contractor to ensure it meets with local codes and range requirements. I understand that Raw Urth is not liable for any issues concerning the liner meeting these requirements.



3046 - NORTH STAR KITCHENS-DOWNSVIEW SHOWROOM - BOX HOOD

**RAW URTH DESIGNS**

P.O. BOX 369  
BELLVUE, COLORADO 80512  
TELE: 970.484.8851  
E-MAIL: STEEL@RAWURTH.COM

|           |          |
|-----------|----------|
| REVISION: | DATE:    |
| 2         | 01.31.19 |

JOB: 3046

DRAWN BY: JENKS

**NOTES:**

1. MATERIAL: Brass
2. FINISH:  
Burnished w/ Clear Coat
3. LINER: Imperial C2030BPB-K,  
840CFM, 10" Vent. Procured Thru  
Raw Urth.
4. Installation on site by others.  
Verify location of duct in order to  
clear mounting straps.

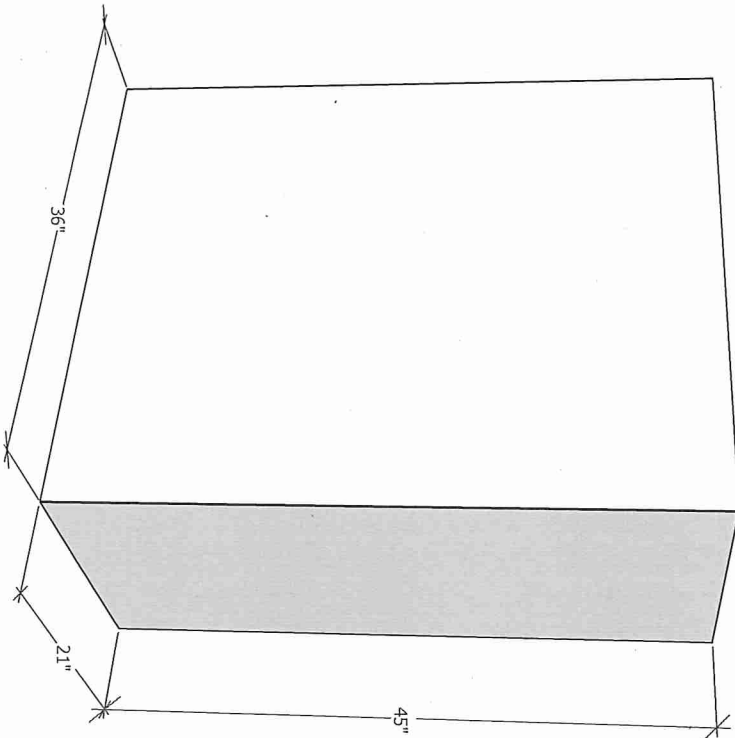
**CLIENT APPROVAL:**

**APPROVAL DATE:**

2.1.19

CLIENT MUST INITIAL & DATE PRIOR  
TO FABRICATION OF DESIGN.

THIS DESIGN IS THE PROPERTY OF RAW URTH  
AND IS SUBMITTED FOR YOUR USE IN  
CONJUNCTION WITH A PROJECT BEING PLANNED  
FOR YOU BY RAW URTH. IT CANNOT BE  
REPRODUCED EITHER IN WHOLE OR IN PART  
WITHOUT THEIR WRITTEN CONSENT.



3046 - NORTH STAR KITCHENS-DOWNSVIEW SHOWROOM - BOX HOOD

AP 02

**RAW URTH DESIGNS**

P.O. BOX 369  
 BELLEVUE, COLORADO 80512  
 TELE: 970.484.8851  
 E-MAIL: STEEL@RAWURTH.COM

REVISION: 2      DATE: 01.31.19

JOB: 3046

DRAWN BY: JENKS

**NOTES:**

1. MATERIAL: Brass
2. FINISH: Burnished w/ Clear Coat
3. LINER: Imperial C2030BPP-K, 840CFM, 10" vent. Procured Thru Raw Urth.
4. Installation on site by others. Verify location of duct in order to clear mounting straps.

**CLIENT APPROVAL:**

**APPROVAL DATE:**

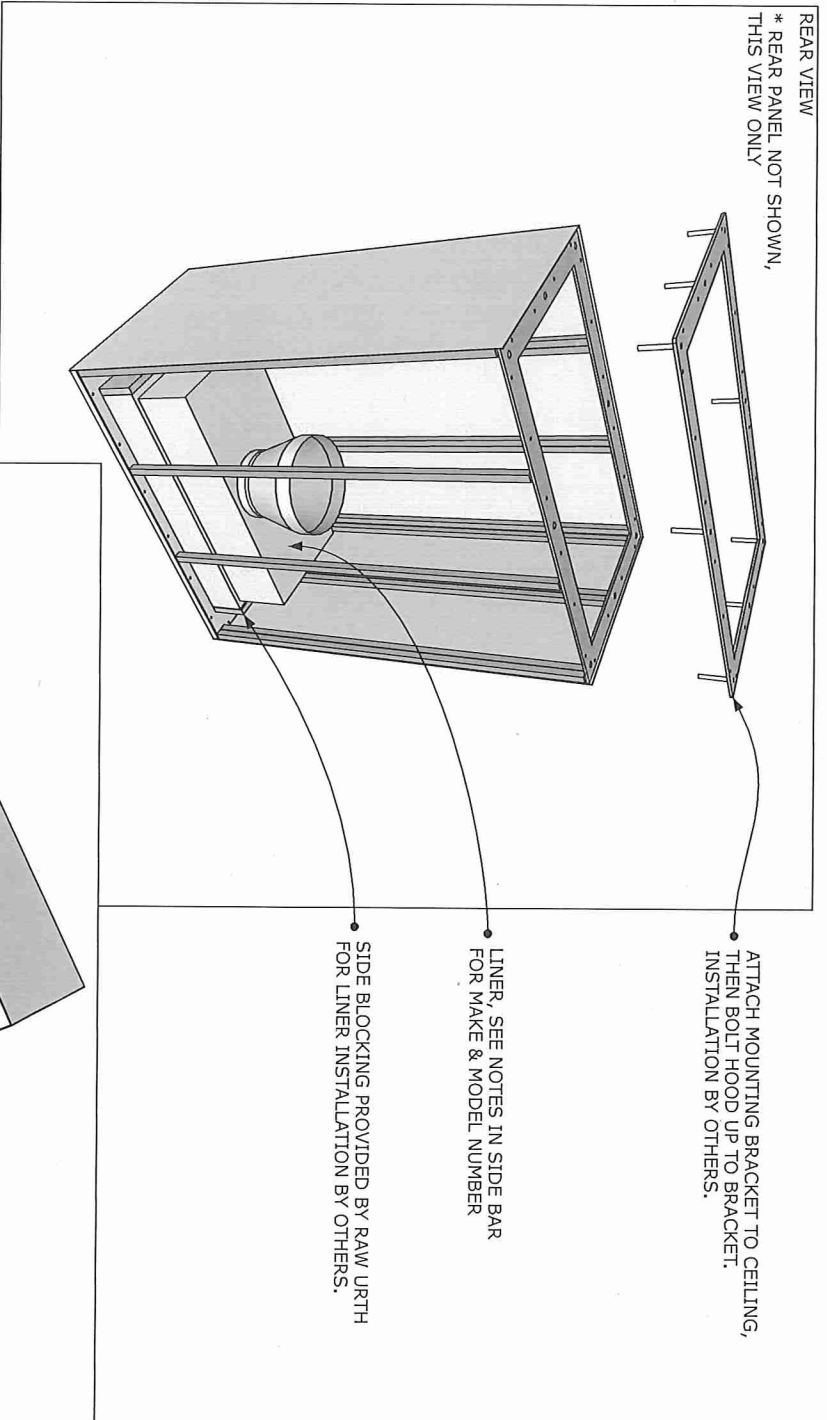
2.1.19

CLIENT MUST INITIAL & DATE PRIOR TO FABRICATION OF DESIGN.

THIS DESIGN IS THE PROPERTY OF RAW URTH AND IS SUBMITTED FOR YOUR USE IN CONJUNCTION WITH A PROJECT BEING PLANNED FOR YOU BY RAW URTH. IT CANNOT BE REPRODUCED EITHER IN WHOLE OR IN PART WITHOUT THEIR WRITTEN CONSENT.

**REAR VIEW**

\* REAR PANEL NOT SHOWN, THIS VIEW ONLY



3046 - NORTH STAR KITCHENS-DOWNSVIEW SHOWROOM - BOX HOOD



**RAW URTH DESIGNS**

P.O. BOX 369  
 BELLVUE, COLORADO 800512  
 TELE: 970.484.8851  
 E-MAIL: STEEL@RAWURTH.COM


|           |          |
|-----------|----------|
| REVISION: | DATE:    |
| 2         | 01.31.19 |

JOB: 3046

DRAWN BY: JENKS

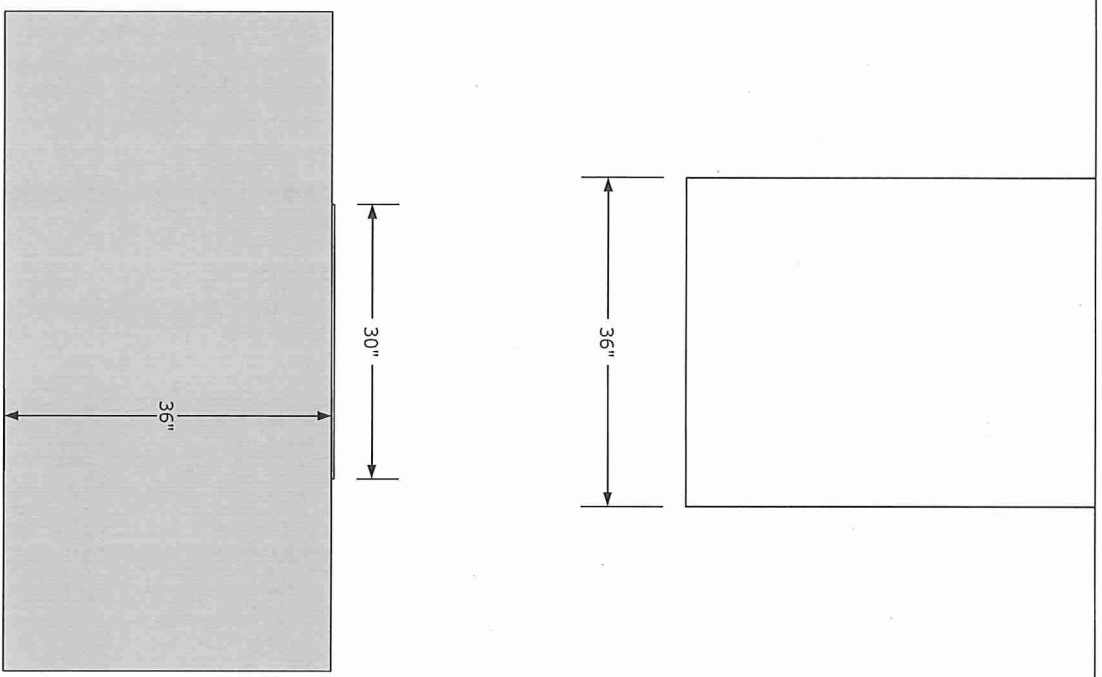
**NOTES:**

1. MATERIAL: Brass
2. FINISH: Burnished w/ Clear Coat
3. LINER: Imperial C2030BPP-K, 840CFM, 10" vent. Procured Thru Raw Urth.
4. Installation on site by others. Verify location of duct in order to clear mounting straps.

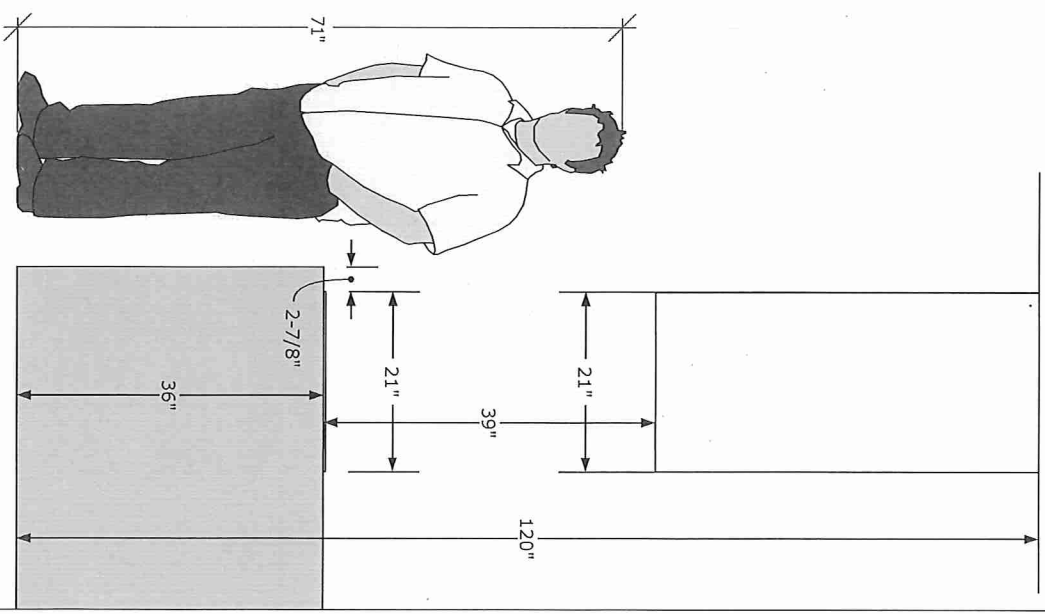
**CLIENT APPROVAL:**  
  
**APPROVAL DATE:**  
 2.1.19

CLIENT MUST INITIAL & DATE PRIOR TO FABRICATION OF DESIGN.  
 THIS DESIGN IS THE PROPERTY OF RAW URTH AND IS SUBMITTED FOR YOUR USE IN CONJUNCTION WITH A PROJECT BEING PLANNED FOR YOU BY RAW URTH. IT CANNOT BE REPRODUCED EITHER IN WHOLE OR IN PART WITHOUT THEIR WRITTEN CONSENT.

**FRONT ELEVATION**



**RIGHT ELEVATION**



3046 - NORTH STAR KITCHENS-DOWNSVIEW SHOWROOM - BOX HOOD

AP 04